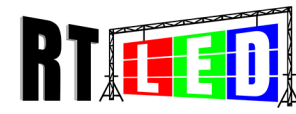


RT-Sincere, Responsible, Young
CE, RoHS, FCC, CB, ETL Certificated

Specification

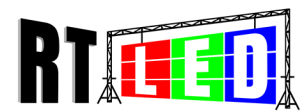
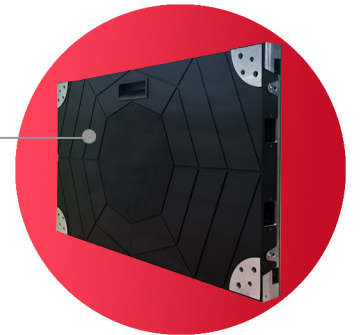
	P1.25	P1.56	P1.875	P2.5
Pixel Pitch	1.25mm	1.56mm	1.875mm	2.5mm
Density	640,000 dots/m ²	410,913 dots/m ²	284,444 dots/m ²	160,000 dots/m ²
Led Type	SMD1010	SMD1212	SMD1515	SMD1515
Drive Method	1/45 Scan	1/48 Scan	1/30 Scan	1/30 Scan
Best Viewing Distance	1 - 12m	1.5 - 15m	1.8 - 20m	2.5 - 25m
Brightness	800 nits	800 nits	900 nits	900 nits
Max Power Consumption	650W	650W	650W	550W
Average Power Consumption	250W	250W	250W	180W
Panel Size	600 x 337.5 mm	600 x 337.5 mm	600 x 337.5 mm	600 x 337.5 mm
Panel Resolution	480 x 270 dots	384 x 216 dots	320 x 180 dots	240 x 135 dots
Panel Material	Die Casting Aluminum			
Screen Weight	7KG			
Best Viewing Angle	H 140°, V 140°			
Input Voltage	AC110V/220V ±10%			
Maintenance Way	Front Access			
Life Span	100,000 Hours			



RTLED-ViuTV Series

ViuTV Series LED display panel designed with golden ratio 16:9, and the pixel pitch is small with high definition, it can bring perfect visual effect.

Small LED Panel



SHENZHEN RENTALLED PHOTOELECTRIC TECHNOLOGY CO., LTD.

Tel: 0086-755-29792143 Mobile/WhatsApp: 0086-13510835945

Address: 2F, Anda Electronic Technology Park, Bao'an District, Shenzhen, China

Monitor Room / Meeting Room

P1.25 / P1.56 / P1.875 / P2.5

RTLED-ViuTV Series

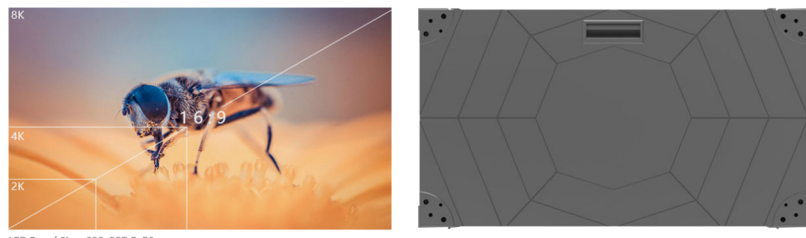


ViuTV Series LED display panel designed with golden ratio 16:9, and the pixel pitch is small with high definition, it can bring perfect visual effect.



600X337.5MM STANDARD SIZE

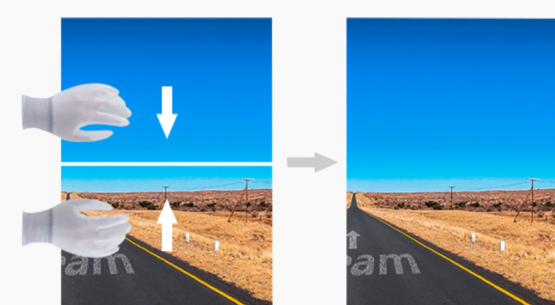
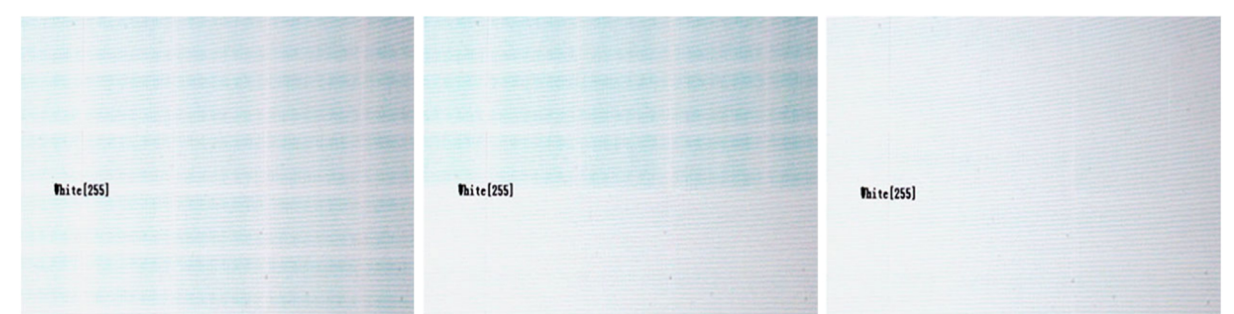
ViuTV Series adopt 16:9 golden ratio LED panel design, it can combine to 2K 4K and 8K easily. No cable cabinet design, makes it looks simple and beautiful.



LED Panel Size: 600x337.5x50mm

THERMAL EFFECT CORRECTION

When working for long time, because of heat, many LED displays will show blue color block on screen. While ViuTV series can solve the problem perfectly.



HIGH FLATNESS

ViuTV series LED panel has high flatness, they can splice to seamless big LED video wall.

HIGH REFRESH RATE

RTLED use high performance drive IC for ViuTV series LED screen, their refresh rate is 3840Hz - 7680Hz. It can play video stably without black screen and ripple. Images are more clear.



STRONG PROTECTION

ViuTV series use GOB LED modules, it is sealed by epoxy resin, they are waterproof, moisture-proof, dust-proof, anti-collision and anti-oxidation, and it is abrasion resistant and can be cleaned easily.

