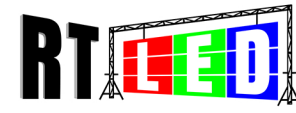


RT-Sincere, Responsible, Young
CE, RoHS, FCC, CB, ETL Certificated

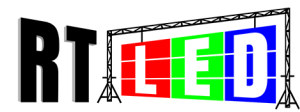
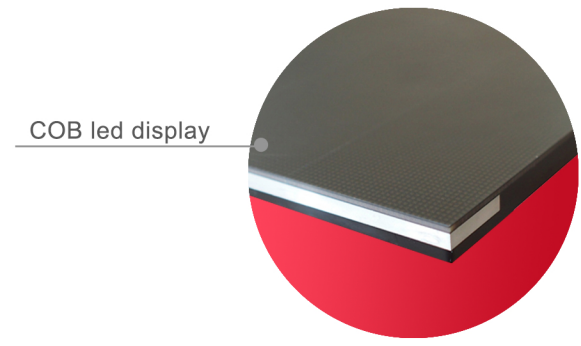
Specification

	P0.93 common cathode	P1.25 common cathode
Pixel Pitch	0.93mm	1.25mm
Density	1,156,203 dots/m ²	640,000 dots/m ²
Module Size	150 x 168.75mm	150 x 168.75mm
Led Type	COB1010	COB1010
Panel Size	600 x 337.5 x 50mm	600 x 337.5 x 50mm
Panel Resolution	640 x 360 dots	480 x 270 dots
Panel Weight	6.5KG	6.5KG
Drive Method	1/60 Scan	1/45 Scan
Best Viewing Angle	H 140°, V 140°	H 140°, V 140°
Best Viewing Distance	0.8 - 10m	1.2 - 15m
Brightness	500 -900 nits	600 -900 nits
Input Voltage	AC110V/220V ±10%	AC110V/220V ±10%
Max Power Consumption	550W	300W
Average Power Consumption	180W	95W
Maintenance Way	Front Access	Front Access
Average Power Consumption	-20 - +50°C	-20 - +50°C
Maintenance Way	10% - 90% RH	10% - 90% RH



RTLED-COB Series

COB, the LED light-emitting chip is directly packaged on the PCB board, it can effectively improves the viewing comfort, protection and safety and reliability of the LED display.

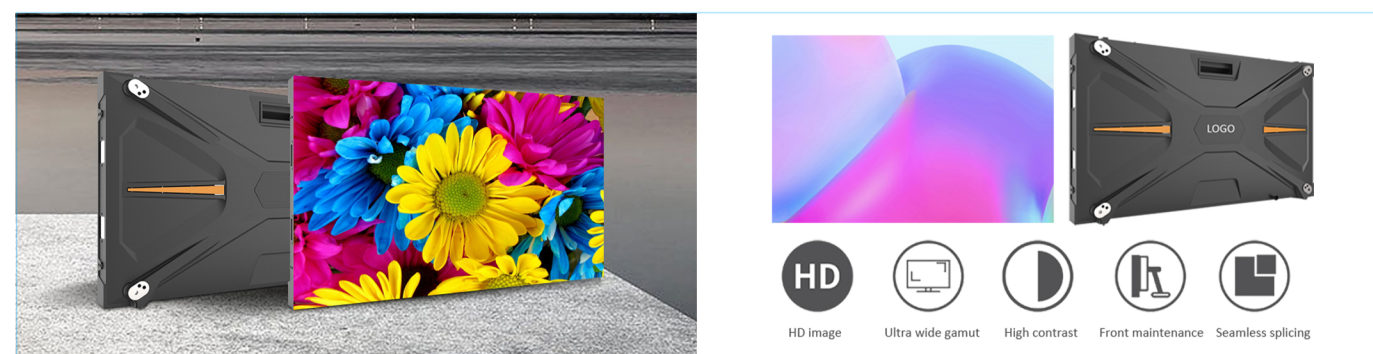


SHENZHEN RENTALLED PHOTOELECTRIC TECHNOLOGY CO., LTD.
Tel: 0086-755-29792143 Mobile/WhatsApp: 0086-13510835945
Address: 2F, Anda Electronic Technology Park, Bao'an District, Shenzhen, China

Monitor Room / Exhibition / HD TV
P0.93 / P1.25

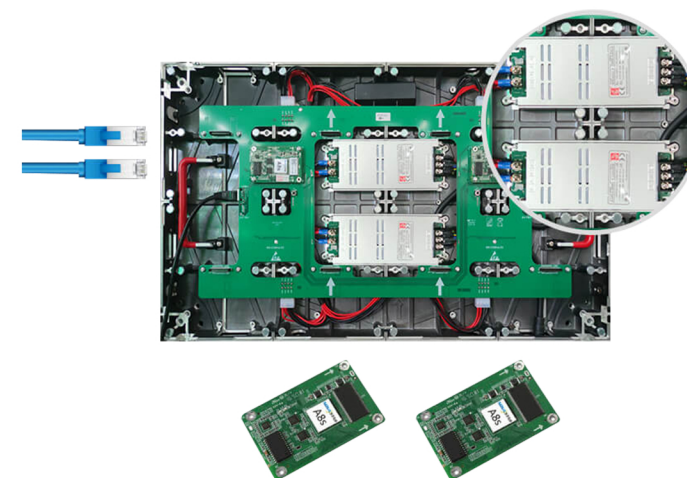
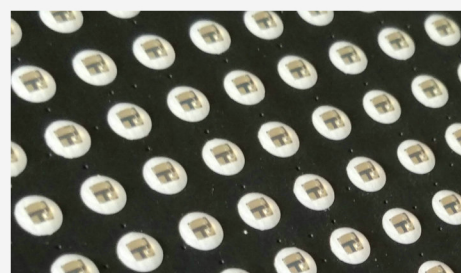
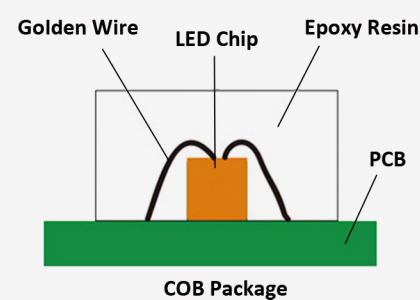
RTLED-COB Series

RTLED COB LED display panel size is 600 x 337.5mm, with 16:9 golden ratio. LED video panel is totally front maintenance. It has high definition and wide gamut, usually pixel pitch is less than 2.5mm.



COB ADVANTAGES

1. LED chip is directly packaged on the PCB without bracket, which can increase the pixel density.
2. Cured with epoxy resin to improve the protective performance.
3. Increase the viewing angle to bring a better visual effect.
4. Using PCB board to dissipate heat, reduce chip heat resistance and improve LED display reliability and stability.
5. Realize the conversion of LED from point to face, and the image is more uniform.
6. Improve the contrast of LED display, effectively reduce the light intensity, eliminate glare, and not easy to produce visual fatigue.

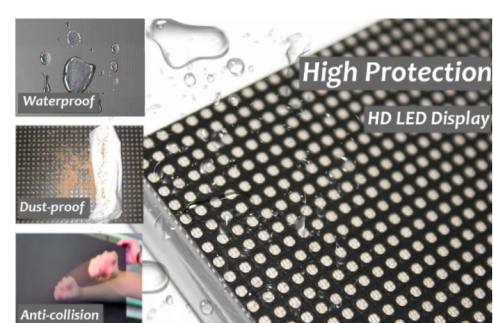


NEVER BLACK SCREEN

RTLED COB LED display support dual backup for power and signal. When one power supply or receiving card has problem, another one will connect automatically, to achieve never black screen. It very suitable for live broadcast, monitor room, command center, conference etc.

ULTRA LIGHT AND THIN

RTLED COB LED display designed with complete front access, LED module and LED cabinet is ultra thin, total only 46mm, weight is 6.5KG/pc.



HIGH PROTECTION

Sealed with epoxy resin, RTLED COB LED display is waterproof, dust-proof, moisture proof and anti-collision. It is durable and can be cleared easily.